

Features

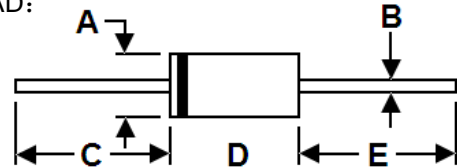
- * Low Forward Voltage Drop
- * High Current Capability
- * High Reliability
- * High Surge Current Capability



RoHS
COMPLIANT

Package Outline Dimensions

DO-201AD:



DIM.	Unit (mm)		Unit (inch)	
	Min	Max	Min	Max
A	4.8	5.3	0.189	0.209
B	1.2	1.3	0.047	0.051
C	25.4	-	1.0	-
D	7.2	9.6	0.283	0.378
E	25.4	-	1.0	-

Mechanical Data

- * Case: Molded plastic
- * Epoxy: UL 94V-0 rate flame retardant
- * Lead: Axial leads, solderable per MIL-STD-202, method 208 guaranteed
- * Polarity: Color band denotes cathode end
- * Mounting Position: Any

Maximum Ratings and Electrical Characteristics

Rating at 25 °C ambient temperature unless otherwise specified. Single phase, half wave, 60 Hz, resistive or inductive load. For capacitive load, derate current by 20%.

Type Number	Symbol	BY296	BY297	BY298	BY299	Unit
Maximum Recurrent Peak Reverse Voltage	V_{RRM}	100	200	400	800	V
Maximum RMS Voltage	V_{RMS}	70	140	280	560	V
Maximum D.C Blocking Voltage	V_{DC}	100	200	400	800	V
Maximum Average Forward Rectified Current .375" (9.5mm)Lead Length @ $T_A=55^{\circ}C$	$I_{F(AV)}$	2.0				A
Peak Forward Surge Current, 8.3ms single half sine-wave superimposed on rated load(JEDEC method)	I_{FSM}	70				A
Maximum Instantaneous Forward Voltage at 2.0A	V_F	1.2				V
Maximum D.C Reverse Current @ $T_A=25^{\circ}C$ at Rated D.C Blocking Voltage @ $T_A=100^{\circ}C$	I_R	5.0 100				μA
Maximum Reverse Recovery Time(Note1)	T_{rr}	250				nS
Typical Junction Capacitance(Note2)	C_J	40				pF
Typical Thermal Resistance (Note 3)	$R_{\theta JA}$	55				$^{\circ}C/W$
Operating and Storage Temperature Range	T_J/T_{STG}	-55 to +150				$^{\circ}C$

Note:1、 Reverse Recovery Test Conditions: $I_F=0.5A$, $I_R=1.0A$, $I_{RR}=0.25A$.

2、 Measured at 1MHz and Applied Reverse Voltage of 4.0V D.C.

3、 Mount on Cu-Pad Size 16mm x 16mm on P.C.B.

Ratings and Characteristic Curves

FIG.1- MAXIMUM FORWARD CURRENT DERATING CURVE

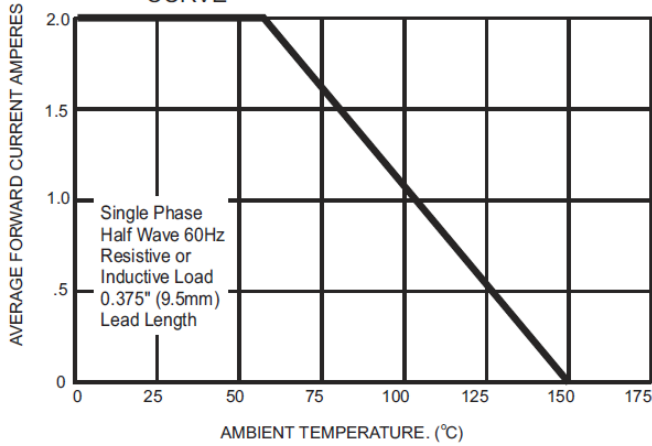


FIG.2- MAXIMUM NON-REPETITIVE PEAK FORWARD SURGE CURRENT

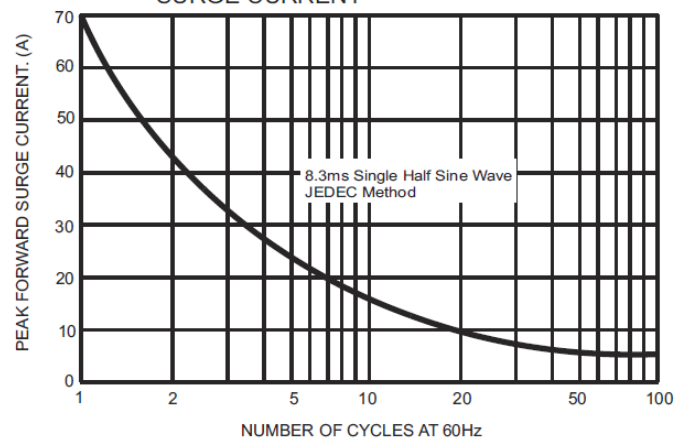


FIG.3- TYPICAL FORWARD CHARACTERISTICS

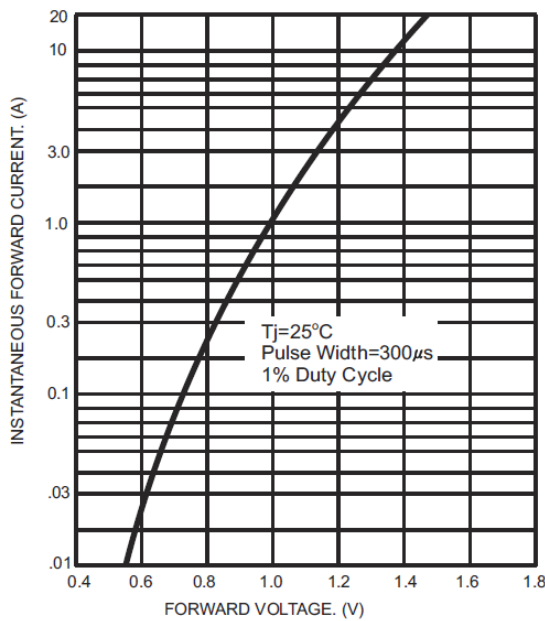


FIG.4- TYPICAL JUNCTION CAPACITANCE

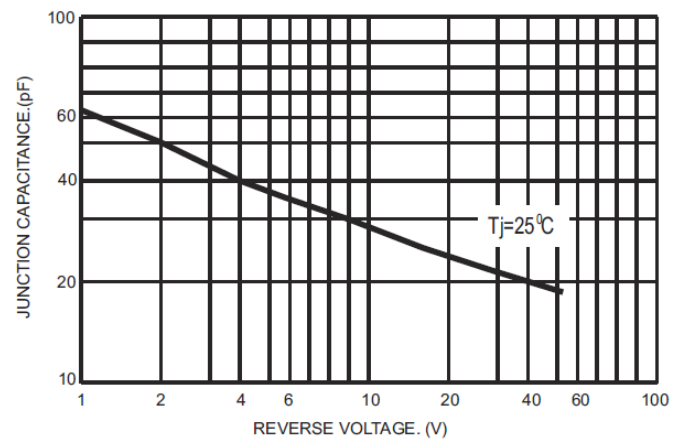
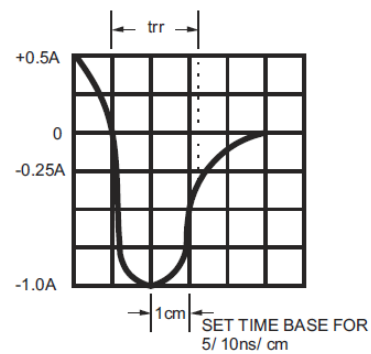
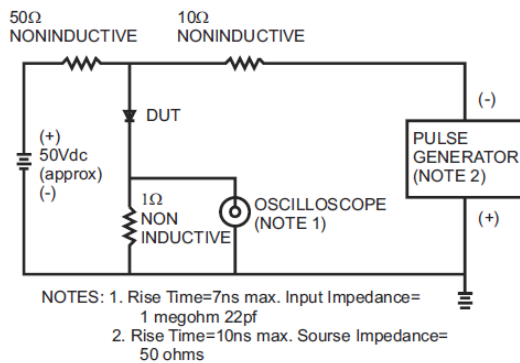


FIG.5- REVERSE RECOVERY TIME CHARACTERISTIC AND TEST CIRCUIT DIAGRAM





BY296 THRU BY299
2.0 Amps. Fast Recovery Rectifiers

Ordering Information

Part No.	Package	Packing
BY296~BY299	DO-201AD	0.8K/AMMO box
BY296~BY299	DO-201AD	1.2K/AMMO box
BY296~BY299	DO-201AD	1.2K/13" Paper reel
BY296~BY299	DO-201AD	0.5K/Bulk packing